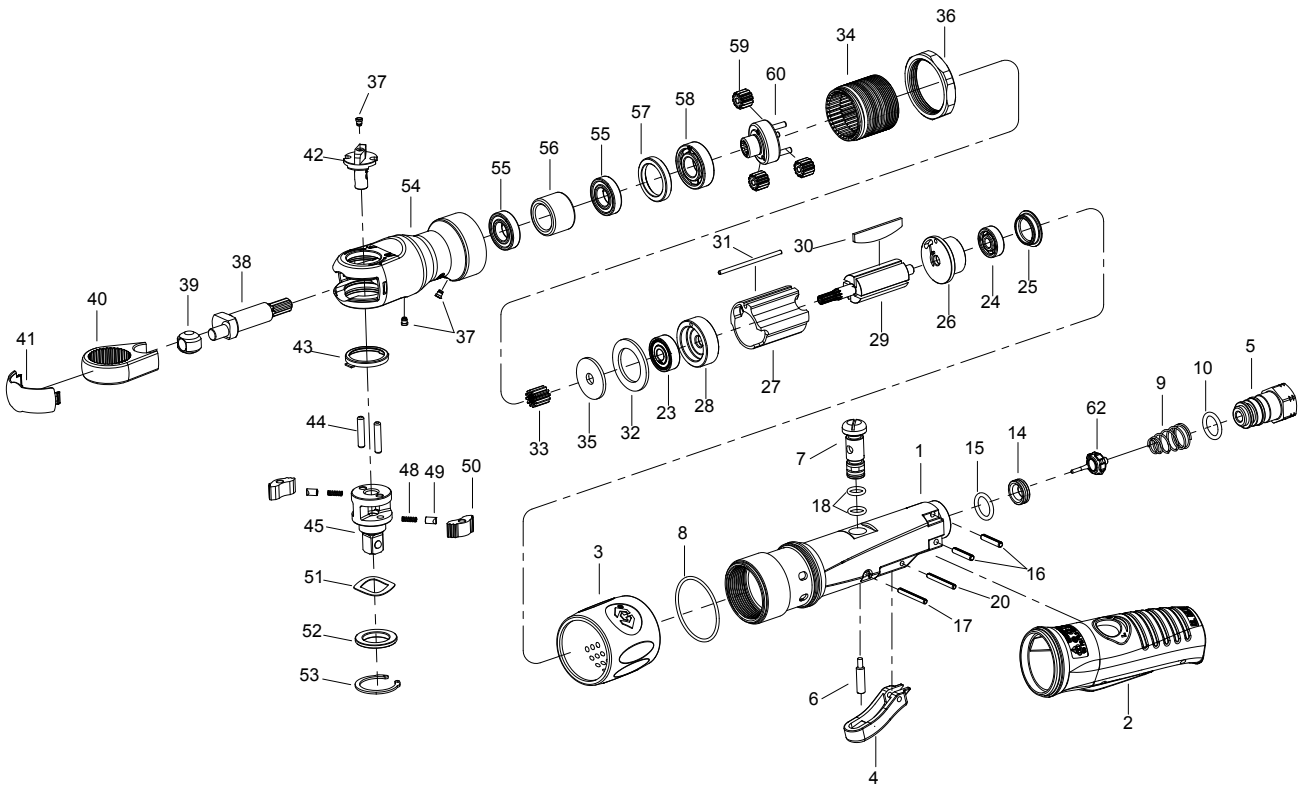


# 3/8" DR. RATCHET WRENCH



No.37323-080  
37323-081



INDEX NO.	KT No.	DESCRIPTION	REQ'D NO.	INDEX NO.	KT No.	DESCRIPTION	REQ'D NO.
1	037423-A01	Motor Housing	1	34	037423-A34	Ring Gear	1
2	037423-A02	Rubber Grip	1	35	037423-A35	Spacer	1
3	037423-A03	Exhaust Deflector	1	36	037423-A36	Coupling Nut	1
4	037423-A04	Trigger	1	● 37	037221-A52	Grease Fitting	3
5	037423-A05	Air Inlet ( for 19 BSPT )	1	38	037423-A38	Crank shaft	1
5A	037423-A05A	Air Inlet ( for 18 NPT )	1	39	037423-A39	Drive Bushing	1
6	037423-A06	Throttle Valve Plunger	1	40	037423-A40	Ratchet Yoke	1
7	037423-A07	Air Regulator	1	41	037423-A41	Ratchet Housing Cover	1
8	037423-A08	O-Ring	1	★ 42	037423-A42	Reverse Knob Assembly ( incl. 37 )	1
9	033812-A05	Spring	1	43	037423-A43	Thrust Washer	1
10	037423-A10	O-Ring	1	44	033421-A09	Pin	2
14	033411-A02	Throttle Valve Seat	1	45	037323-A45	Ratchet Anvil Assembly	1
15	033411-A20A	O-Ring	1	48	037423-A48	Ratchet Spring	2
16	037423-A16	Pin	2	49	037423-A49	Ratchet Lock Pin	2
17	037423-A17	Pin	1	50	037423-A50	Ratchet Pawl	2
18	033421-A03	O-Ring	2	51	037423-A51	Wave Washer	1
20	037423-A20	Pin	1	52	037423-A52	Thrust Washer	1
23	037423-A23	Bearing	1	53	037423-A53	Retaining Ring	1
24	037423-A24	Bearing	1	★ 54	037423-A54	Ratchet Housing Assembly ( incl. 37 ( 2 ) )	1
25	037423-A25	End Cap	1	55	037423-A55	Bearing	2
26	037423-A26	End Plate	1	56	037423-A56	Bushing	1
27	037423-A27	Cylinder	1	57	037423-A57	Spacer	1
28	037423-A28	End Plate	1	58	037423-A58	Bearing	1
29	037423-A29	Rotor	1	59	037423-A59	Planet Gear	3
30	037423-A30	Rotor Blade	4	60	037423-A60	Work Spindle	1
31	037423-A31	Cylinder Dowel	1	62	037423-A62	Throttle Valve Assembly	1
32	037423-A32	Washer	1	TK-01	037323-ATK1	Ratchet Anvil Assembly ( incl. 37.42.44 ( 2 ) .45.48 ( 2 ) .49 ( 2 ) .50 ( 2 ) )	
33	037423-A33	Inner Gear	1	TK	037423-ATK	Tune-Up Kit ( incl. 8.9.10.15.18 ( 2 ) )	

★ Must be purchased in assembly set

● Recommended not to be purchased alone due to assembly difficulty

20131206R3

**Air Pressure : 6.2 Bar (90 PSI)**

Inspec. Item No.	Square drive inch	Std. Bolt Size		Free Speed R.P.M	MAX. Torque		Overall Length		Air Inlet BSP/NPT	Air Hose ID	Avg.Air Consumption		Net Weight		Sound Pressure Level A- weighted	Sound Power Level A-weighted	Sound Pressure Valve Peak C-weighted	Vib. M/S2
		inch	mm		ft-lb	N.m	inch	mm			cfm	l/min	lbs	kgs				
37323-080	3/8	3/8	M10	280	80	108	11	279	1/4" BSPT	3/8	4.0	113	2.76	1.25	94.00	105.00	96.00	2.52
37323-081	3/8	3/8	M10	280	80	108	11	279	1/4" NPT	3/8	4.0	113	2.76	1.25	94.00	105.00	96.00	2.52

8937323080-KT

192x288mm

