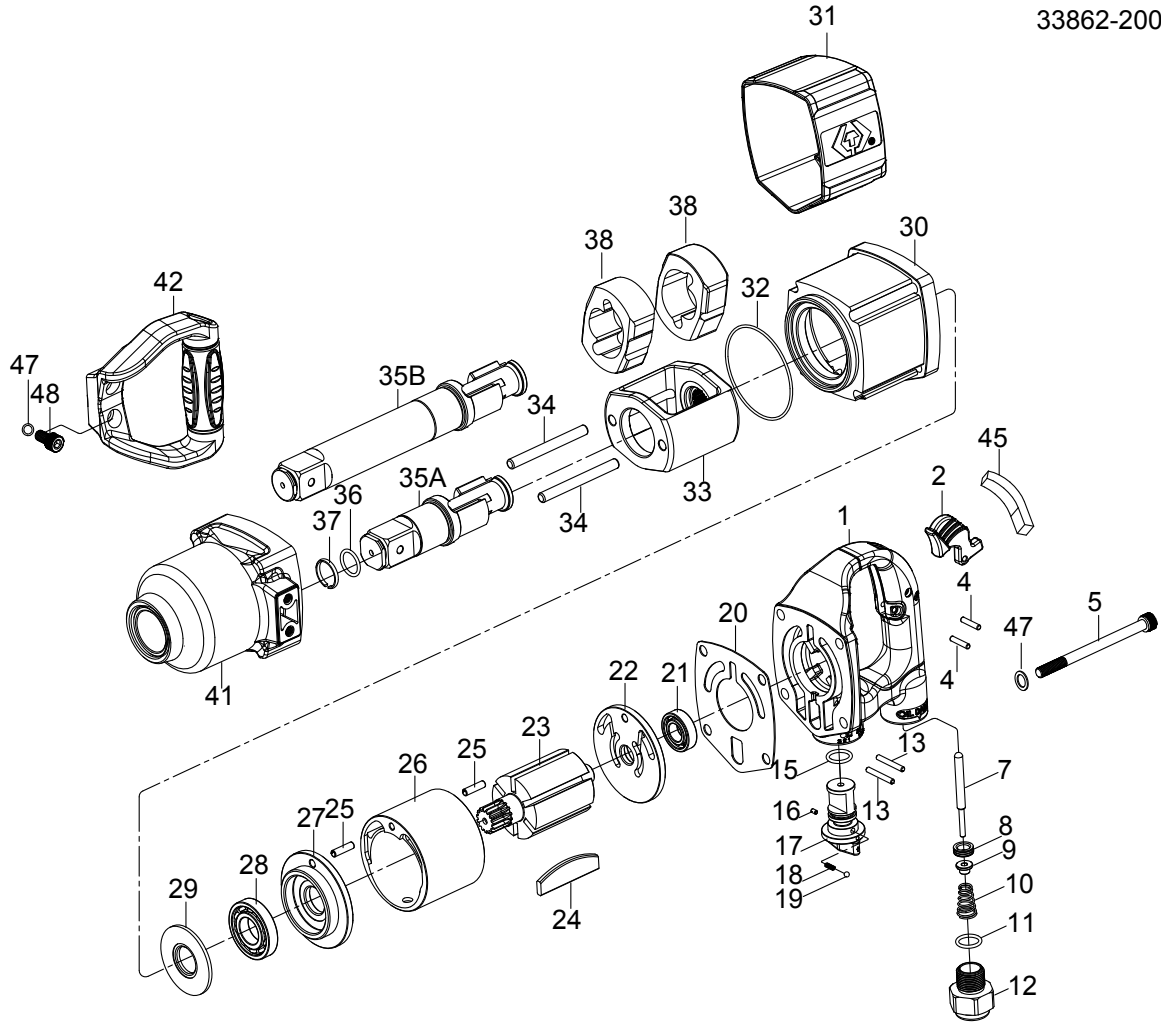


1" DR. IMPACT WRENCH



NO.33861-200
33862-200



| INDEX NO. | KT No. | DESCRIPTION | REQ'D NO. | INDEX NO. | KT No. | DESCRIPTION | REQ'D NO. |
|-----------|-------------|------------------------|-----------|-----------|-------------|--|-----------|
| 1 | 033861-A01 | Backhead Assembly | 1 | 28 | 033631-C27 | Bearing | 1 |
| 2 | 033861-A02 | Inside Trigger | 1 | 29 | 033631-C35 | Washer | 1 |
| 4 | 033421-A09 | Pin | 2 | 30 | 033861-A30 | Housing | 1 |
| 5 | 033861-A05 | Screw | 4 | 31 | 033861-A31 | Rubber Grip | 1 |
| 7 | 033861-A07 | Throttle Valve Plunger | 1 | 32 | 033861-A32 | O-Ring | 1 |
| 8 | 033812-A02A | Throttle Valve Seat | 1 | 33 | 033861-A33 | Hammer Frame | 1 |
| 9 | 033812-A04 | Throttle Valve | 1 | 34 | 033861-A34 | Hammer Pin | 2 |
| 10 | 033812-A05 | Spring | 1 | 35A | 033861-A35A | Standard Anvil (for 33861-200) | 1 |
| 11 | 033812-A06 | O-Ring | 1 | 35B | 033861-A35B | 6" Extended Anvil (for 33862-200) | 1 |
| 12 | 033812-A10B | Air Inlet | 1 | 36 | 033812-A48 | O-Ring | 1 |
| 13 | 033812-A14 | Pin | 2 | 37 | 033812-A49 | Socket Retainer | 1 |
| 15 | 033812-A06 | O-Ring | 1 | 38 | 033861-A38 | Hammer | 2 |
| 16 | 033812-A20 | Pin | 1 | 41 | 033861-A41 | Hammer Case Assembly | 1 |
| 17 | 033812-A17 | Reverse Valve | 1 | 42 | 033861-A42 | Side Spade Handle | 1 |
| 18 | 033411-A14 | Spring | 1 | 45 | 033861-A45 | Rubber Cap | 1 |
| 19 | 033812-A18 | Steel Ball | 1 | 47 | 033812-A44A | Washer | 6 |
| 20 | 033861-A20 | Gasket | 1 | 48 | 033861-A48 | Screw | 2 |
| ● 21 | 033411-B24 | Bearing | 1 | TK-01 | 033861-ATK1 | End plate Assembly (incl. 21.22.25) | |
| ★ 22 | 033861-A22 | End Plate (incl. 21) | 1 | TK-02 | 033861-ATK2 | End plate Assembly (incl. 25.27.28) | |
| 23 | 033861-A23 | Rotor | 1 | TK-03 | 033861-ATK3 | Standard Anvil (incl. 35A.36.37) | |
| 24 | 033861-A24 | Rotor Blade | 6 | TK-04 | 033861-ATK4 | 6" Extended Anvil (incl. 35B.36.37) | |
| 25 | 033861-A25 | Pin | 2 | TK-05 | 033861-ATK5 | Side Spade Handle (incl. 42.47 (2).48 (2)) | |
| 26 | 033861-A26 | Cylinder | 1 | TK | 033861-ATK | Tune-Up Kit (incl. 10.11.15.18.19.20.24 (6) .32.36.37) | |
| 27 | 033861-A27 | End Plate | 1 | | | | |

★ Must be purchased in assembly set

● Recommended not to be purchased alone due to assembly difficulty

20131206R3

Air Pressure : 6.2 Bar (90 PSI)

| Inspec. Item No. | Square drive | Std. Bolt Size | | Free Speed | MAX. Torque | | Overall Length | | Air Inlet | Air Hose | Avg. Air Consumption | Net Weight | | Sound Pressure Level A-weighted | Sound Power Level A-weighted | Sound Pressure Valve Peak C-weighted | Vib. M/S2 | |
|------------------|--------------|----------------|-----|------------|-------------|------|----------------|-----|-----------|----------|----------------------|------------|-------|---------------------------------|------------------------------|--------------------------------------|-----------|-------|
| | inch | inch | mm | R.P.M | ft-lb | N.m | inch | mm | BSPT/NPT | ID | cfm | l/min | lbs | kgs | | | | |
| 33861-200 | 1 | 1-27/64 | M36 | 5000 | 2000 | 2712 | 13-43/64 | 347 | 1/2" BSPT | 3/4 | 9.0 | 255 | 16.31 | 7.40 | 106.00 | 121.00 | 117.00 | 17.20 |
| 33862-200 | 1 | 1-27/64 | M36 | 5000 | 2000 | 2712 | 19-3/16 | 487 | 1/2" BSPT | 3/4 | 9.0 | 255 | 17.86 | 8.10 | 104.00 | 120.00 | 115.00 | 14.50 |

