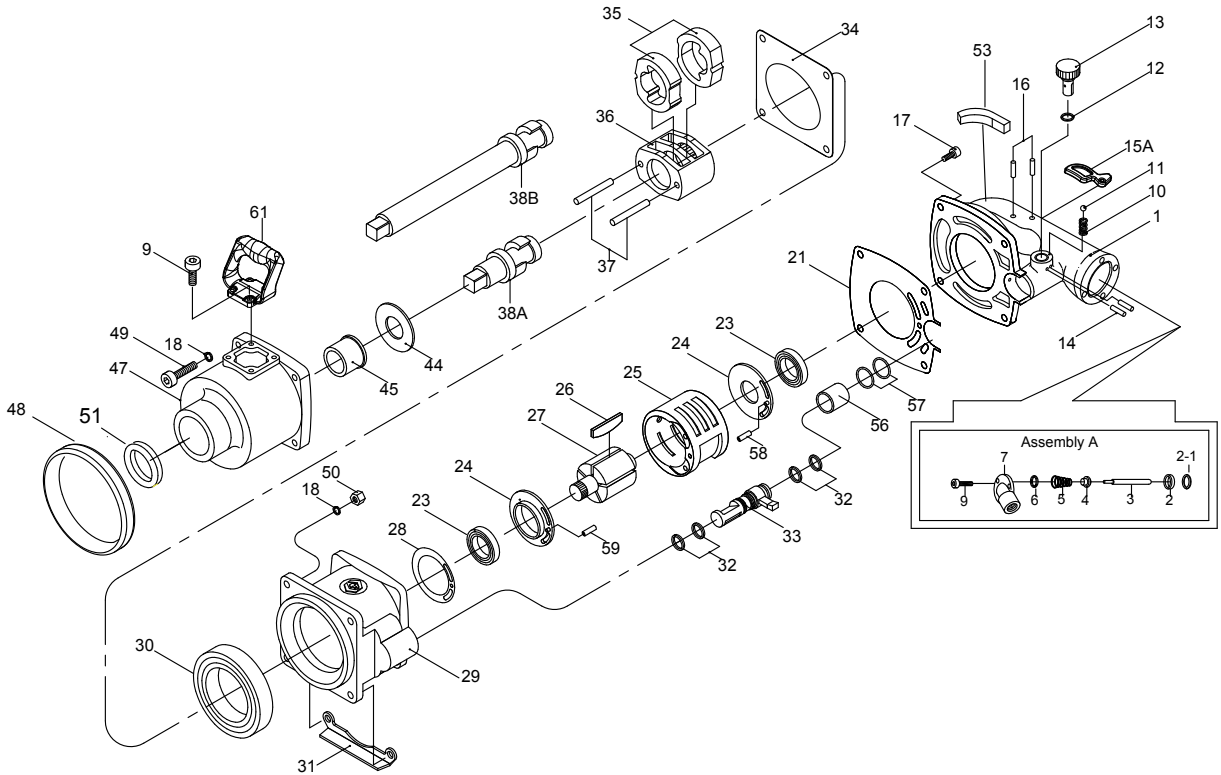


1" DR. IMPACT WRENCH



NO.33851-250
33852-250



INDEX NO.	KT No.	DESCRIPTION	REQ'D NO.	INDEX NO.	KT No.	DESCRIPTION	REQ'D NO.
★ 1	033851-B01	Backhead Assembly	1	31	033851-B31	Motor Housing Protector	1
● 2	033812-A02A	Throttle Valve Seat	1	32	033841-A09	O-Ring	4
● 2-1	033851-B02A	Throttle Valve Gasket	1	33	033851-B33	Reverse Valve	1
● 3	033851-B03	Throttle Valve Plunger	1	34	033851-B34	Hammer Case Gasket	1
● 4	033812-A04	Throttle Valve	1	35	033851-B35	Hammer	2
● 5	033851-B05	Throttle Valve Spring	1	36	033851-B36	Hammer Frame	1
● 6	033841-A09	O-Ring	1	37	033851-B37	Hammer Pin	2
★ 7	033851-B07	Air Inlet Assembly (incl. 2.2-1.3.4.5.6.9)	1	38A	033851-B38A	Standard Anvil (for 33851-250)	1
9	033621-B04	Screw Assembly	8	38B	033851-B38B	8" Extended Anvil (for 33852-250)	1
10	033411-A14	Ball Spring	1	44	033851-B44	Washer	1
11	033411-A13	Steel Ball	1	45	033851-B45	Bushing	1
12	033851-B12	O-Ring	1	47	033851-B47	Hammer Case	1
13	033851-B13	Air Regulator	1	48	033851-B48	Shield Housing Nose	1
14	033851-B14	Pin	2	49	033851-B49	Screw	4
15A	033851-B15A	Trigger	1	50	033812-A61	Lock Nut	4
16	033812-A12	Pin	2	51	033851-B51	Oil Seal	1
17	033812-A21A	Screw Assembly	4	53	033812-A11	Rubber Cap	1
18	033812-A44A	Washer	6	56	033851-B56	Bushing	1
21	033851-B21	Housing Cover Gasket	1	57	033851-B57	O-Ring	2
● 23	033851-B23	Bearing	2	58	033812-A29A	Pin	1
★ 24	033851-B24	End Plate Assembly (incl. 23)	2	59	033812-A29	Pin	1
25	033851-B25	Cylinder	1	61	033812-A45	Side Spade Handle	1
26	033851-B26	Rotor Blade	7	TK-01	033851-BTK1	End Plate Assembly (incl. 23.24.58)	
27	033851-B27	Rotor	1	TK-02	033851-BTK2	End Plate Assembly (incl. 23.24.59)	
28	033851-B28	Gasket	1	TK-03	033851-BTK3	Hammer Case Assembly (incl. 45.47.51)	
29	033851-B29	Housing Assembly	1	TK	033851-BTK	Tune-Up Kit (incl. 5.6.10.11.12.21.26 (7) .28.32 (4) .34.57 (2))	
30	033851-B30	Bearing	1				

★ Must be purchased in assembly set

● Recommended not to be purchased alone due to assembly difficulty

20131206R3

Air Pressure : 6.2 Bar (90 PSI)

Inspec. Item No.	Square drive	Std. Bolt Size		Free Speed	MAX. Torque		Overall Length		Air Inlet	Air Hose	Avg. Air Consumption		Net Weight		Sound Pressure Level A-weighted	Sound Power Level A-weighted	Sound Pressure Valve Peak C-weighted	Vib. M/S ²
	inch	inch	mm	R.P.M	ft-lb	N.m	inch	mm	BSPT/NPT	ID	cfm	l/min	lbs	kgs				
33851-250	1	1-25/32	M45	3000	2500	3388	17-11/64	436	1/2" BSPT	3/4	14.5	411	34.83	15.80	101.15	112.14	104.00	6.30
33852-250	1	1-25/32	M45	3000	2500	3388	24-7/8	632	1/2" BSPT	3/4	14.5	411	41.23	18.70	101.91	112.91	105.00	6.49

8933851250-KT

192x288mm

