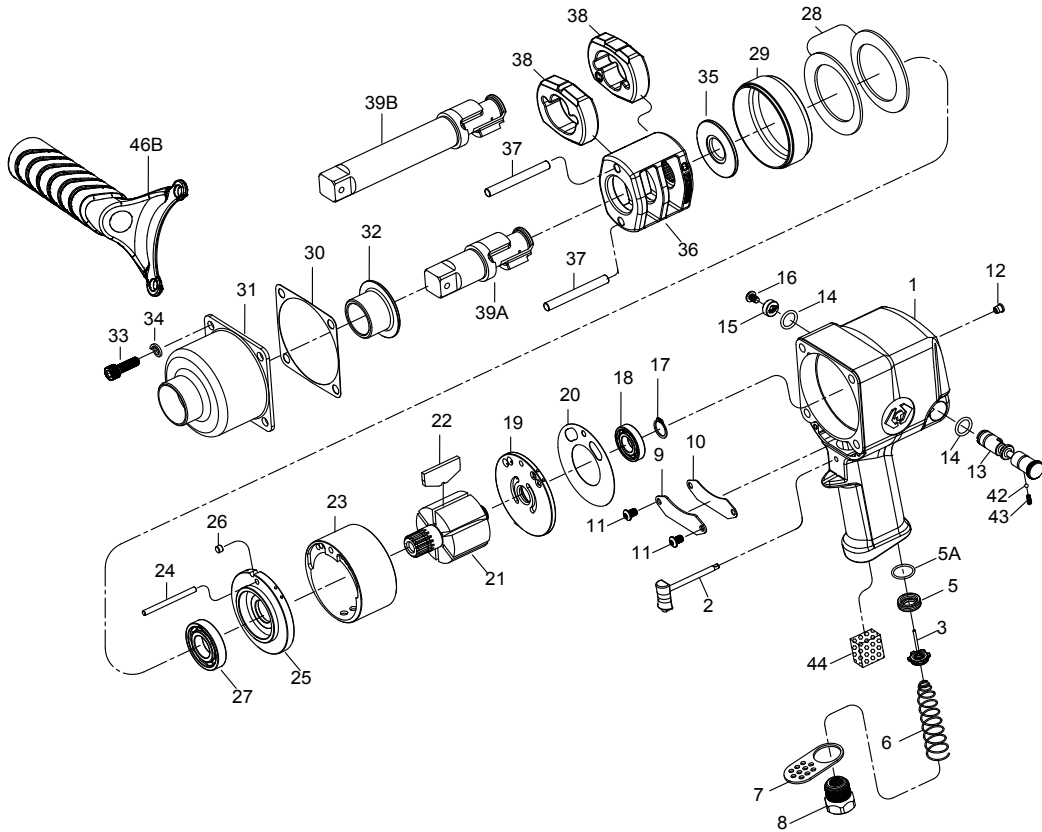


1" DR. IMPACT WRENCH



NO.33851-120
33851-121
33852-120
33852-121



INDEX NO.	KT No.	DESCRIPTION	REQ'D NO.	INDEX NO.	KT No.	DESCRIPTION	REQ'D NO.
★ 1	033851-A01	Housing Assembly (incl. 5.5A.12)	1	24	033631-C24	Cylinder Dowel	1
★ 2	033631-C02	Trigger Assembly	1	★ 25	033631-C25	End Plate Assembly (incl. 27)	1
3	033631-C03	Throttle Valve Assembly	1	26	033631-C26	Pin	1
5	033851-A05	Throttle Valve Seat	1	● 27	033631-C27	Bearing	1
5A	033851-A05A	O-Ring	1	28	033631-C28	Motor Clamp Washer	2
6	033631-C06	Spring	1	29	033631-C29	Separator	1
7	033631-C07	Exhaust Deflector	1	30	033631-C30	Gasket	1
8	033631-C08	Air Inlet (for 19 BSPT)	1	31	033631-C31	Hammer Case	1
8A	033631-C08A	Air Inlet (for 18 NPT)	1	32	033631-C32	Bushing	1
9	033631-C09	Housing Plate	1	33	033631-C33	Screw	4
10	033631-C10	Gasket	1	34	033812-A44A	Washer	4
11	033621-B41	Screw	2	35	033631-C35	Washer	1
● 12	033411-A07	Grease Fitting	1	36	033631-C36	Hammer Frame	1
13	033631-C13	Reverse Valve	1	37	033631-C37	Hammer Pin	2
14	033631-C14	O-Ring	2	38	033631-C38	Hammer	2
15	033411-A15	Reverse Valve Knob	1	● 39A	033851-A39A	Standard Anvil (for 33851-120)	1
16	033411-A16	Screw	1	● 39B	033851-A39B	6" Extended Anvil (for 33852-120)	1
17	033631-C17	Retainer	1	● 42	033411-A13	Steel Ball	1
● 18	033631-C18	Bearing	1	43	033411-A14	Spring	1
★ 19	033631-C19	End Plate Assembly (incl. 18)	1	44	033621-B43	Muffler Element	1
20	033631-C20	Gasket	1	46B	033631-C46B	Handle (Select)	1
21	033631-C21	Rotor	1	TK-05	033631-CTK5	Hammer Case Assembly(incl. 31.32)	
22	033631-C22	Rotor Blade	6	TK	033851-CTK	Tune-Up Kit (incl. 6.14 (2) .17.20.22 (6) .30.42.43)	
23	033631-C23	Cylinder	1				

★ Must be purchased in assembly set

● Recommended not to be purchased alone due to assembly difficulty

20131206R4

Air Pressure : 6.2 Bar (90 PSI)

Inspec. Item No.	Square drive	Std. Bolt Size		Free Speed	MAX. Torque		Overall Length		Air Inlet	Air Hose	Avg. Air Consumption	Net Weight		Sound Pressure Level A-weighted	Sound Power Level A-weighted	Sound Pressure Valve Peak C-weighted	Vib. M/S ²	
	inch	inch	mm	R.P.M	ft-lb	N.m	inch	mm	BSPT/NPT	ID	cfm	l/min	lbs	kgs				
33851-120	1	1-17/64	M32	5500	1200	1626	8-53/64	224	3/8" BSPT	1/2	9.5	269	12.43	5.64	99.75	110.74	101.00	6.57
33851-121	1	1-17/64	M32	5500	1200	1626	8-53/64	224	3/8" NPT	1/2	9.5	269	12.43	5.64	99.75	110.74	101.00	6.57
33852-120	1	1-17/64	M32	5500	1200	1626	14-1/64	356	3/8" BSPT	1/2	9.5	269	13.32	6.04	98.00	109.00	123.00	8.40
33852-121	1	1-17/64	M32	5500	1200	1626	14-1/64	356	3/8" NPT	1/2	9.5	269	13.32	6.04	98.00	109.00	123.00	8.40

8933851120-KT

192x288mm

