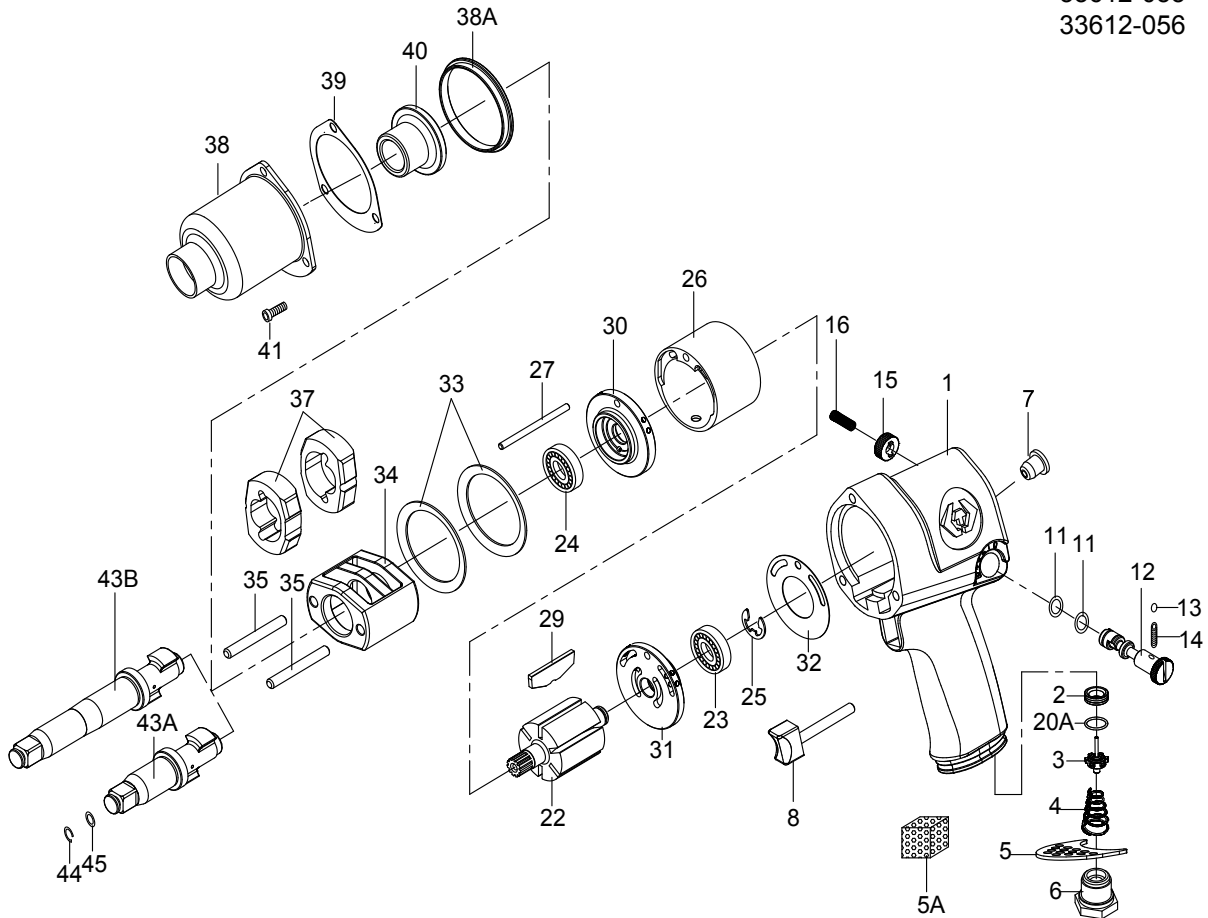


3/4" DR. IMPACT WRENCH



NO.33611-055
33611-056
33612-055
33612-056



INDEX NO.	KT No.	DESCRIPTION	REQ'D NO.	INDEX NO.	KT No.	DESCRIPTION	REQ'D NO.
★ 1	033411-B01	Housing Assembly (incl. 2.7.20A)	1	27	033411-B27	Cylinder Dowel	1
2	033411-A02	Throttle Valve Seat	1	29	033411-B29	Rotor Blade	6
3	033411-A03	Throttle Valve Assembly	1	30	033411-B30	End Plate	1
4	033411-A04	Spring	1	31	033411-B31	End Plate	1
5	033411-A05	Exhaust Deflector	1	32	033411-A32	Gasket	1
5A	033621-B43	Muffler Element	1	33	033411-A33	Motor Clamp Washer	2
6	033411-A06	Air Inlet (for 19 BSPT)	1	34	033611-A34	Hammer Frame	1
6A	033411-A06A	Air Inlet (for 18 NPT)	1	35	033411-A35	Hammer Pin	2
● 7	033411-A07	Grease Fitting	1	37	033411-A37	Hammer	2
★ 8	033411-A08	Trigger Assembly	1	38	033411-A38	Hammer Case	1
● 11	033411-B11	O-Ring	2	38A	033411-A38A	Hammer Case Pilot	1
12	033411-A12	Reverse Valve	1	39	033411-A39	Gasket	1
13	033411-A13	Steel Ball	1	40	033611-A38A	Bushing	1
14	033411-A14	Spring	1	41	033411-A41	Screw	3
15	033411-A15	Reverse Valve Knob	1	● 43A	033611-A43A	Standard Anvil (for 33611-055)	1
16	033411-A16	Screw	1	● 43B	033611-A43B	2" Extended Anvil (for 33612-055)	1
20A	033411-A20A	O-Ring	1	44	033611-A44	Socket Retainer	1
22	033411-B22	Rotor	1	45	033611-A45	O-Ring	1
23	033411-A23	Bearing	1	TK-03	033611-ATK3	Standard Anvil Assembly (incl. 43A.44.45)	
24	033411-B24	Bearing	1	TK-04	033611-ATK4	2" Extended Anvil Assembly (incl. 43B.44.45)	
25	033411-A25	Retainer	1	TK-05	033611-ATK5	Hammer Case Assembly (incl. 38.40)	
26	033411-B26	Cylinder	1	TK	033611-ATK	Tune-Up Kit (incl. 3.4.11 (2) .25.29 (6) .32.39.44.45)	

★ Must be purchased in assembly set

● Recommended not to be purchased alone due to assembly difficulty

20131206R5

Air Pressure : 6.2 Bar (90 PSI)

Inspec. Item No.	Square drive	Std. Bolt Size	Free Speed	MAX. Torque		Overall Length		Air Inlet	Air Hose	Avg. Air Consumption		Net Weight		Sound Pressure Level A-weighted	Sound Power Level A-weighted	Sound Pressure Valve Peak C-weighted	Vib. M/S ²	
	inch	inch	mm	R.P.M	ft-lb	N.m	inch	mm	BSPT/NPT	ID	cfm	l/min	lbs	kgs				
33611-055	3/4	7/8	M20	6500	700	949	7-13/32	188	1/4" BSPT	3/8	4.4	125	6.61	3.00	96.56	107.55	97.80	8.64
33611-056	3/4	7/8	M20	6500	700	949	7-13/32	188	1/4" NPT	3/8	4.4	125	6.61	3.00	96.56	107.55	97.80	8.64
33612-055	3/4	7/8	M20	6500	700	949	11-13/32	290	1/4" BSPT	3/8	4.4	125	7.50	3.40	96.86	107.85	98.10	6.17
33612-056	3/4	7/8	M20	6500	700	949	11-13/32	290	1/4" NPT	3/8	4.4	125	7.50	3.40	96.86	107.85	98.10	6.17

