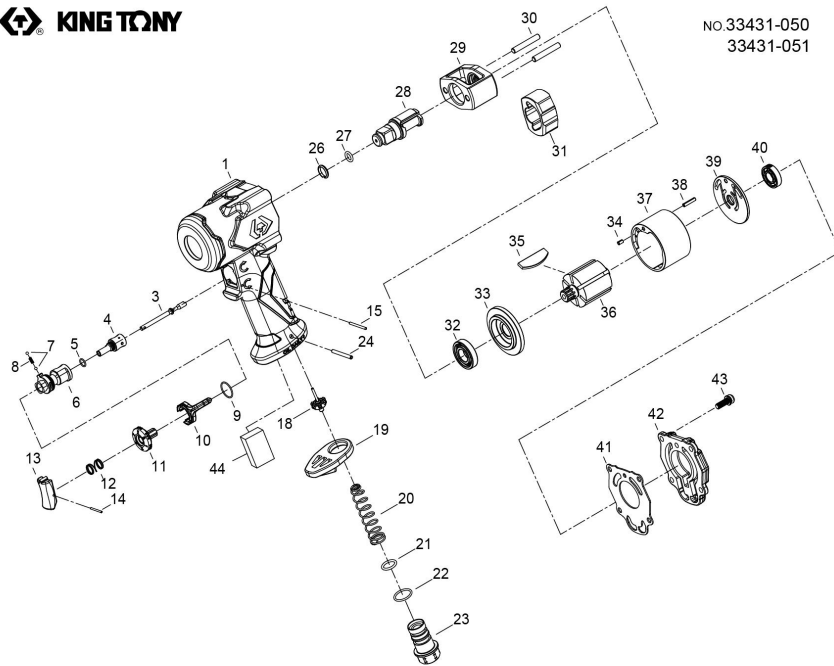


1/2" DR. IMPACT WRENCH



NO.33431-050
33431-051



INDEX NO.	KT NO.	Description	Qty	INDEX NO.	KT NO.	Description	Qty
01	033431-B01	Motor housing assembly	1	27	037221-A08	O-ring	1
03	033431-B03	Valve stem	1	28	033431-B28	Standard anvil	1
04	033431-B04	Throttle valve	1	29	033431-B29	Hammer frame	1
05	033431-A04	O-ring	1	30	033431-B30	Hammer pin	2
06	033431-B06	Reverse valve	1	31	033431-B31	Hammer	1
07	033311-A10	Steel ball	2	32	033411-A24	Ball bearing	1
08	033431-B08	Spring	1	33	033431-B33	Front end plate	1
09	033431-B09	O-ring	1	34	033812-A20	Spring pin	1
10	033431-A09	Reverse knob	1	35	033431-B35	Rotor blade	6
11	033431-A10	Reverse valve	1	36	033431-B36	Rotor	1
12	033431-A11	Spring	1	37	033431-B37	Cylinder	1
13	033431-B13	Trigger	1	38	033111-A44	Spring pin	1
14	033431-A13	Spring pin	1	39	033431-B39	Rear end plate	1
15	033431-A16	Pin	1	40	033311-A25	Ball bearing	1
18	033411-A03	Throttle valve assembly	1	41	033431-B41	Gasket	1
19	033431-A22	Exhaust deflector	1	42	033431-B42	Back head	1
20	033311-A04	Spring	1	43	033431-B43	Screw	4
21	037423-A10	O-ring	1	44	033481-A45	Muffler element	1
22	033841-A09	O-ring	1	TK-01	033431-BTK1	Standard anvil assembly (incl.26.27.28)	1
23	033431-A26	Air inlet (19PT)	1	TK-02	033431-BTK2	Front end plate assembly (incl.32.33)	1
23	033431-A26A	Air inlet (18NPT)	1	TK-03	033431-BTK3	Rear end plate assembly (incl.39.40)	1
24	033431-A17	Spring pin	1				
26	033411-A44	Socket retainer	1	TK	033431-BTK	Tune-up kit (incl.05.07 (2),08.09.12.21.22.26.27.35 (6),41)	

• Recommended not to be purchased alone due to assembly difficulty

20180607R1

Air Pressure : 6.2 bar (90 PSI)

Inspec. Item No.	Square drive	Type anvil	Free speed		MAX. torque		Overall length		Air inlet		Air hose		Air pressure		Avg. air consumption		Net weight	
			R.P.M	ft-lb	N.m	inch	mm	BSPT/NPT	ID	bar	PSI	L/min	CFM	lbs	kgs			
33431-050	1/2"	Std.	9000	500	678	4.3"	109	1/4" BSPT	3/8"	6.2	90	158	5.6	2.98	1.35			
33431-051	1/2"	Std.	9000	500	678	4.3"	109	1/4" NPT	3/8"	6.2	90	158	5.6	2.98	1.35			

http://www.kingtony.com

8933431050-KT

192x288mm



KING TONY

Enjoy your work

KING TONY TOOLS CO., LTD.
No. 11, Alley 150, Lane 516, Sec. 2, Hsi Nan Rd.,
Wu-Jih Dist., Taichung City, Taiwan, R.O.C.
Tel : 886-4-2335-3567 Fax : 886-4-2335-3642

**EC DECLARATION OF CONFORMITY
FOR NON-ANNEX IV MACHINERY
IN ACCORDANCE WITH
MACHINERY SAFETY DIRECTIVES
2006 / 42 / EC**

IMPACT WRENCH OPERATOR'S INSTRUCTION

This impact wrench has the CE approval

WE, **KING TONY TOOLS CO., LTD.** HEREBY CERTIFY THAT THE MACHINERY DESCRIBED BELOW CONFORMS WITH THE ESSENTIAL HEALTH AND SAFETY REQUIREMENTS OF MACHINERY SAFETY DIRECTIVES 2006/42/EC ON THE APPROXIMATION OF THE LAWS OF THE MEMBER STATES RELATING TO THE SAFETY OF MACHINERY,

IMPACT WRENCH

33431-050

33431-051

AND COMPLY WITH THE PROVISIONS SET OUT IN THE FOLLOWING EUROPEAN STANDARD:

ISO 12100:2010 (RISK ASSESSMENT & RISK REDUCTION)

ISO 11148-6:2012 (SAFETY REQUIREMENTS)

ISO 15744:2002 (NOISE LEVEL)

ISO 28927-2:2009 (VIBRATION LEVEL)



DATE OF ISSUE: 1th July 2018

NAME: Lin Hsien-Wen

POSITION/TITLE: General manager

SIGNATURE: *Lin Hsien-Wen*