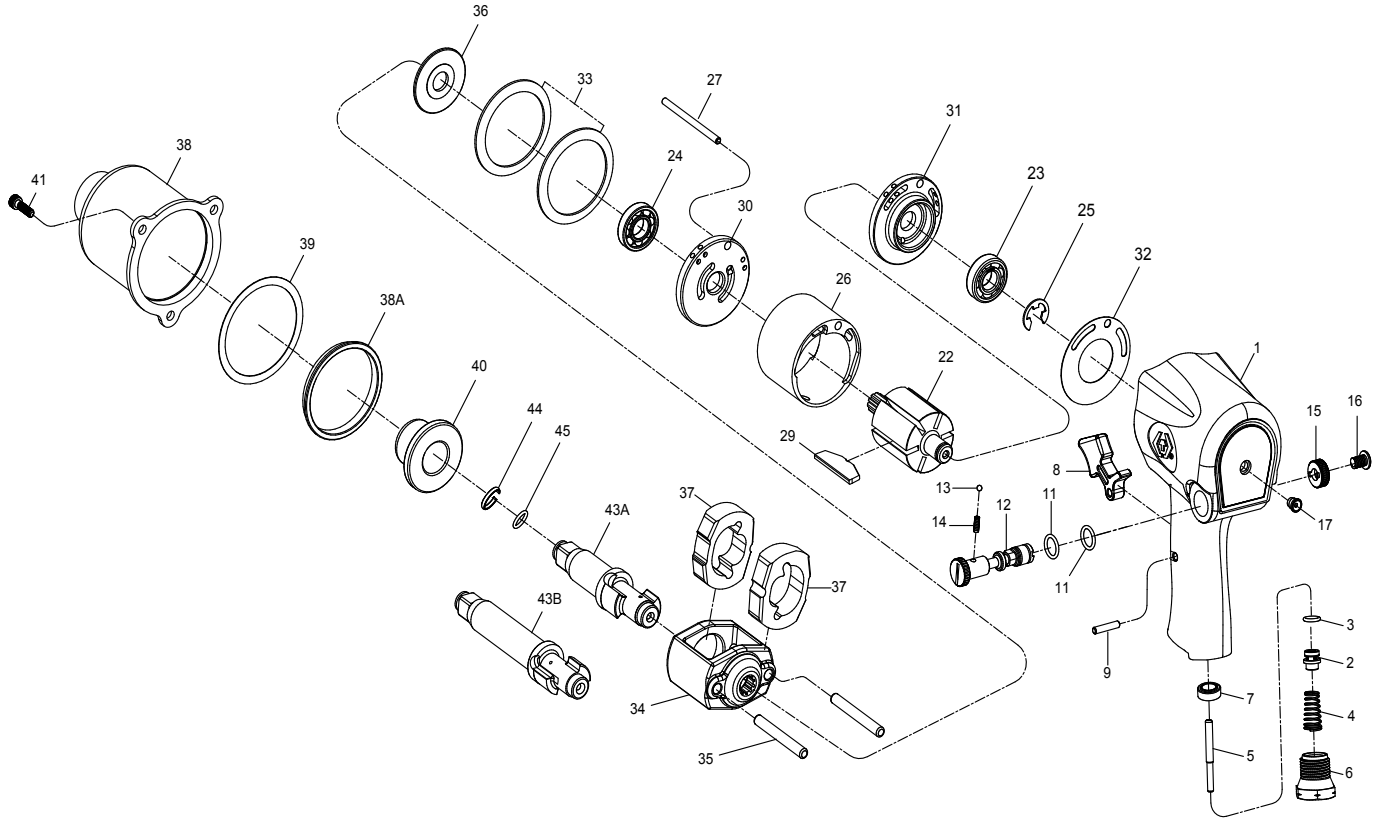


1/2" DR. IMPACT WRENCH



NO.33421-040
33421-041



INDEX NO.	KT No.	DESCRIPTION	REQ'D NO.	INDEX NO.	KT No.	DESCRIPTION	REQ'D NO.
★ 1	033421-A01	Housing Assembly (incl. 7.17)	1	29	033411-A29	Rotor Blade	6
2	033421-A02	Throttle Valve	1	30	033411-A30	End Plate	1
3	033421-A03	O-Ring	1	31	033411-A31	End Plate	1
4	033421-A04	Spring	1	32	033411-A32	Gasket	1
5	033421-A05	Throttle Valve Stem	1	33	033411-A33	Motor Clamp Washer	2
6	033421-A06	Air Inlet (for 19 BSPT)	1	34	033421-A34	Hammer Frame	1
6A	033421-A06A	Air Inlet (for 18 NPT)	1	35	033421-A35	Hammer Pin	2
● 7	033421-A07	Throttle Valve Seat	1	36	033411-A36	Washer	1
8	033421-A08	Trigger	1	37	033411-A37	Hammer	2
9	033421-A09	Trigger Pin	1	38	033421-A38	Hammer Case	1
11	033411-A11	O-Ring	2	38A	033411-A38A	Hammer Case Pilot	1
12	033411-A12	Reverse Valve	1	39	033421-A39	Gasket	1
13	033411-A13	Steel Ball	1	40	033411-A40	Bushing	1
14	033411-A14	Spring	1	41	033421-A41	Screw	3
15	033411-A15	Reverse Valve Knob	1	● 43A	033421-A43A	Standard Anvil	1
16	033411-A16	Screw	1	● 43B	033421-A43B	2" Extended Anvil	1
● 17	033411-A07	Grease Fitting	1	44	033411-A44	Socket Retainer	1
22	033421-A22	Rotor	1	45	033411-A45	O-Ring	1
23	033421-A23	Bearing	1	TK-03	033421-ATK3	Standard Anvil Assembly(Incl. 43A.44.45)	
24	033421-A24	Bearing	1	TK-04	033421-ATK4	2" Extended Anvil Assembly (Incl. 43B.44.45)	
25	033411-A25	Retainer	1	TK-05	033421-ATK5	Hammer Case Assembly (incl. 38.40)	
26	033421-A26	Cylinder	1	TK	033421-ATK	Tune-Up Kit (incl. 3.4.11 (2) .25.29 (6) .32.39.44.45)	
27	033411-A27	Cylinder Dowel	1				

★ Must be purchased in assembly set

● Recommended not to be purchased alone due to assembly difficulty

20131206R6

Air Pressure : 6.2 Bar (90 PSI)

Inspec. Item No.	Square drive	Std. Bolt Size	Free Speed	MAX. Torque	Overall Length		Air Inlet	Air Hose	Avg. Air Consumption		Net Weight		Sound Pressure Level A-weighted	Sound Power Level A-weighted	Sound Pressure Valve Peak C-weighted	Vib. M/S2
	inch	inch / mm	R.P.M	ft-lb / N.m	inch / mm	inch / mm	BSPT/NPT	ID	cfm / l/min	lbs / kgs	101.02	112.01	102.00	8.70		
33421-040	1/2	5/8 M16	8000	500 678	6-3/4 171	1/4" BSPT	3/8	4.0 113	5.64 2.56	101.02	112.01	102.00	8.70			
33421-041	1/2	5/8 M16	8000	500 678	6-3/4 171	1/4" NPT	3/8	4.0 113	5.64 2.56	101.02	112.01	102.00	8.70			

